

Fastening and Termination Bars



Polymer Fastening Bar

The Polymer Fastening Bar is an engineered polymer bar that's used to mechanically fasten EPDM membranes per Carlisle Specifications. The bar is packaged in a 1" x 250' coil that has pre-punched holes every 3" on center. The bar can be easily cut to any desired length. When installing, make sure that all corners of cut bar are rounded. Install the bar using HP or HP-X Fasteners.

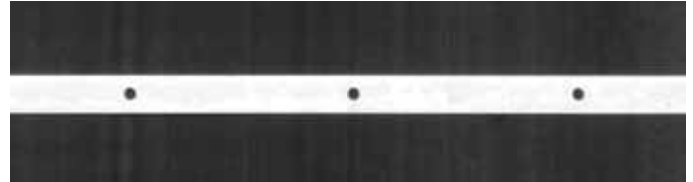
| Typical Properties and Characteristics | |
|--|------------------------------------|
| Material | Engineered Polymer |
| Dimensions | 1" (25 mm) wide x 250' (76 m) long |
| Packaging | 250 lf (76 m) per carton |
| Weight | 10 lbs. (5 kg) carton |



Termination Bar

The Termination Bar is an extruded aluminum bar that's designed for securing and sealing compression type flashing terminations per Carlisle Specifications. The bar is packaged in 1" x 10' lengths, 500 linear feet per package and has pre-punched holes every 6" on center. This bar features a top edge for ease of applying Carlisle's Lap Sealant for EPDM installations or Universal Single Ply Sealant for TPO, PVC, and KEE HP installations. The bar can be easily cut to any desired length. When installing, make sure that all corners of cut bar are rounded. Install the bar using HP-X Fasteners, or Term-Bar Nail In Fasteners.

| Typical Properties and Characteristics | |
|--|-----------------------------------|
| Material | 6063-T6 Extruded Aluminum |
| Dimensions | 1" (25 mm) wide x 10' (3 m) long |
| Packaging | 50 pcs; 500 lf (152 m) per carton |
| Weight | 69 lbs. (31 kg) carton |



Metal Fastening Bar

The Metal Fastening Bar is a Galvalume™ coated metal that's used to mechanically fasten EPDM membranes per Carlisle Specifications. The bar is packaged in 1" x 10' lengths, 500 linear feet per package and has pre-punched holes every 6" on center. The bar can be easily cut to any desired length. When installing, make sure that all corners of cut bar are rounded. Install the bar using HP-X Fasteners.

| Typical Properties and Characteristics | |
|--|-----------------------------------|
| Material | Galvalume Coated Metal |
| Dimensions | 1" (102 mm) wide x 10' (3 m) long |
| Packaging | 50 pcs; 500 lf (152 m) per carton |
| Weight | 85 lbs. (39 kg) carton |



Sure-Seal Ballast Retaining Bar

The Ballast Retaining Bar is an extruded aluminum bar that's designed as a ballast retaining perimeter securement system, which comes packaged in 4" x 10' lengths, 250 linear feet per package. The ballast retaining bar has pre-punched holes every 6" on center for installation, and also has pre-punched drainage holes every 4" on center.

| Typical Properties and Characteristics | |
|--|-----------------------------------|
| Material | 6063-T6 Extruded Aluminum |
| Dimensions | 4" (102 mm) wide x 10' (3 m) long |
| Packaging | 25 pcs; 250 lf (76 m) per carton |
| Weight | 123 lbs. (56 kg) carton |